



Companies House

# **Tim Moss**

Chief Executive of Companies House and  
Registrar of Companies for England and Wales

# Functions

## Registrar's statutory functions

- incorporating companies
- registering changes to details
- dissolving companies and striking off defunct companies
- ensuring compliance with statutory disclosure requirements
- making information available for public inspection and use

**... the information exchange ...**  
**... making limited liability work ...**



Companies House

# information exchange

## Registration



Software



WebFiling



Paper



PUBLIC  
REGISTER



URI



XML



Bulk  
Products



Companies  
House Service



WebCheck



Companies  
House Direct

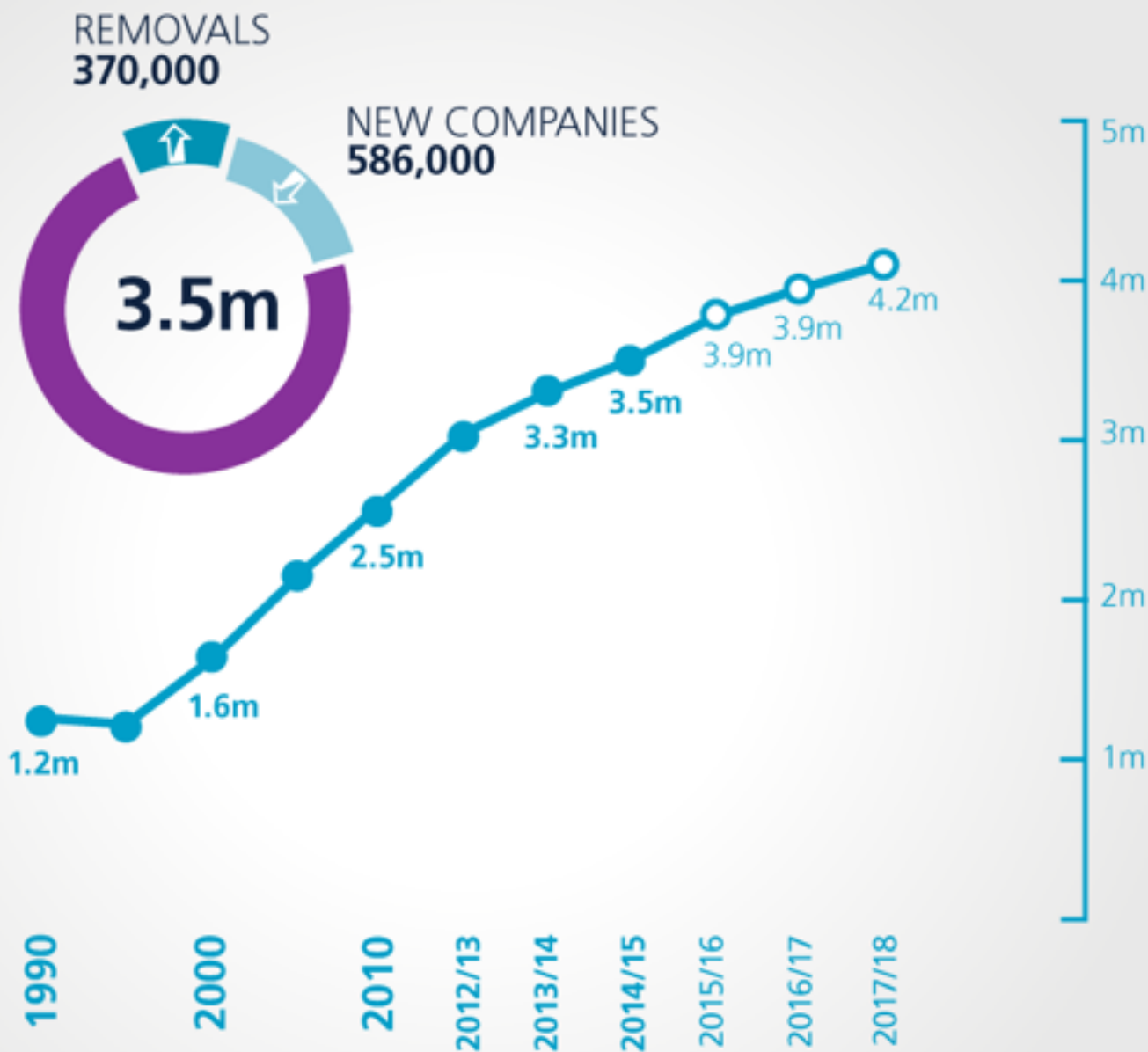


Mobile App



Companies House

# Growth in Register



Companies House

# UK perspective

## **Supporting the economy by making limited liability work**

Easy registration combined with integrity of information leading to excellent corporate transparency

- strong flexible legal framework – small to global
- company - duty to provide accurate information
- most legal effect is not by registration
  - Eg directors, shareholders



# UK perspective

## **Supporting the economy by making limited liability work**

Easy registration combined with integrity of information leading to excellent corporate transparency

- integrity and quality of information
- ease of compliance and high compliance rates
- low costs
- easy and fast access to data



Companies House

# Integrity

COMPLETE, CURRENT and CORRECT



Companies House

# Integrity

## **COMPLETE**, CURRENT and CORRECT



easy low burden digital systems



right first time



reminders



guidance



Companies House

# Integrity

COMPLETE, **CURRENT** and CORRECT



compliance



easy low burden digital systems



regular communications



enforcement



effective dissolution



Companies House

# Integrity

COMPLETE, CURRENT **and CORRECT**



enforcement



dissolution



complaints handling



integrity team



working with others



Companies House

# Integrity

COMPLETE, CURRENT and CORRECT

working with others



HM Revenue  
& Customs



National Fraud Authority



The UK's Fraud Prevention Service



Home Office



The Insolvency Service



National Crime Agency



Companies House

access to



Companies House

access to



- easy access
- multiple routes and formats
- 'many eyes' improves quality
- free data
- supporting the economy through fast access to data



Companies House

## search

WebCheck  
PAID: 1.7m

Companies House  
Direct  
PAID: 3.5m



FREE  
SEARCHES  
292m

(WebCheck, Companies House Direct, URI, XML)

99%



ELECTRONIC  
(1 year)

213m



URI Downloads  
(1 year)

139,000



APP Downloads



Companies House

## bulk information

EQUIFAX



FSA

pwc

THE  
INSOLVENCY  
SERVICE

SOCA



creditsafe  
simply smarter

Lloyds TSB

csa dbsg



POLICE

JORDANS

VOSA  
Vehicle & Operator Services Agency

HM Revenue  
& Customs

Experian  
A world of insight

BARCLAYS

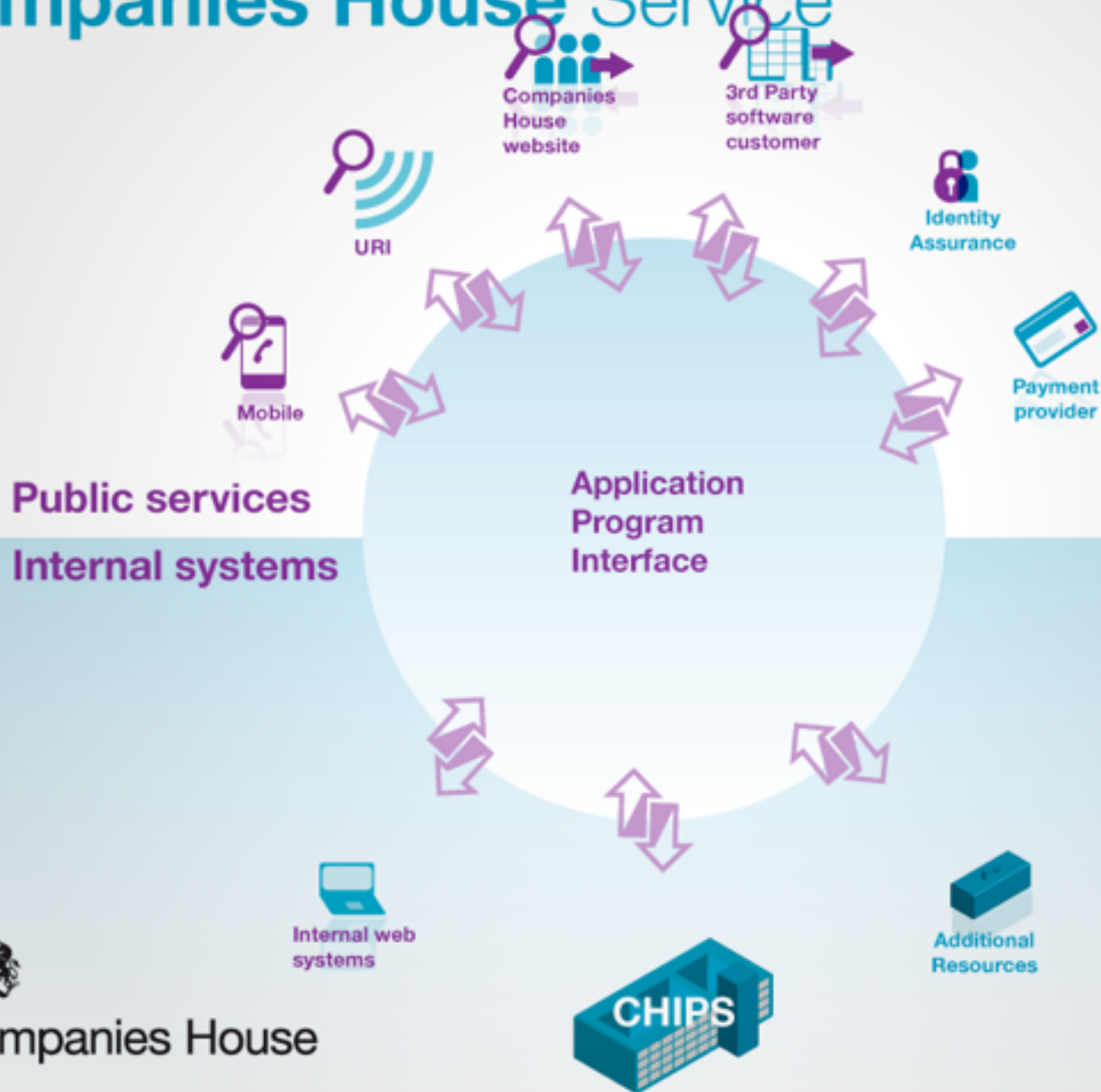
BBC

armadillo  
Worldwide Business Information

Office for  
National Statistics

RBS  
The Royal Bank of Scotland

# Companies House Service



Companies House



**BETA**

This is a trial service — your [feedback](#) will help us to improve it.

[Sign in / Register](#)

**Enter company name or number**



**BETA**This is a trial service - your [feedback](#) will help us to improve it.[Sign in / Register](#)

# BARCLAYS PLC

[File for this company](#)Company number **00048839**[Overview](#)[Filing history](#)[Officers](#)

A Public Limited Company Incorporated on 20 July 1896

Status: **Active**

## Registered office address

1 Churchill Place  
London  
E14 5HP

## Accounts

Next accounts made up to  
**31 December 2014** due by  
**30 June 2015**

Last accounts made up to  
**31 December 2013**

## Annual return

Next annual return made up to  
**31 August 2015** due by  
**28 September 2015**

Last annual return made up to  
**31 August 2014**

## Directors and Secretaries

Name	Role	Appointment date	Date of birth
Lawrence Charles DICKINSON	Secretary	19 Sep 2002	02 Dec 1957

**BETA**

This is a new service.

[Forum](#) [Sign in / Register](#)

## [Companies House API](#)

- [Getting started](#)
- [Quick start](#)
- [Overview](#)
- [Introduction](#)
- [Authorisation](#)
- [Developer guidelines](#)
- [Rate limiting](#)
- [Search](#)
- [Company profile](#)
- [Registered office address](#)
- [Officer list](#)
- [Filing history](#)
- [Insolvency](#)
- [Charges](#)

# Companies House API

If you are new to the Companies House API, we recommend you take a look at the [getting started](#) guide, with the resources and examples provided there to help you.

We also have a support [forum](#) where you can discuss the API, find help and provide feedback.

## API Reference

### Search

Method	HTTP Request	Description
<a href="#">Search company</a>	<code>GET /search/companies</code>	Search companies registered at Companies House

For full documentation regarding these resource URIs, see the [Search](#) page.

For a description of the resources accepted and returned by these URIs, see the [CompanySearch](#) resource representation page.

### Company profile

Method	HTTP Request	Description
<code>get</code>	<code>GET /company/{company_number}</code>	Get the basic company information

# A question or two?

- Pre-registration vs Post-registration checks?
- Lower cost and burdens vs checks and greater certainty?
- Ease of doing business - Filing burdens vs searching burdens?
- Target the few or the many?
- Is any one system better?
  - Better for what: registry, economy, growth, the law...etc.
  - Good or good enough? What's the info used for?
- What role will technology play?
- Evidence / research –
  - Is there any?
  - What would we measure?
  - How can we get some?





“ providing company  
information that  
customers value ”

