



Our data

How to guarantee quality, availability, timeliness together with efficiency, innovation and sustainability

Tim Moss, Registrar of Companies, UK

quality

timeliness

availability

efficiency

OUR DATA

innovation

sustainability



quality

timeliness

availability

efficiency

OUR DATA

innovation

sustainability



Quality and Timeliness

- Integrity of the Register

Mon	Tues	Wed	Thur	Fri	Sat	Sun
1	2	3	4	5	6	7
8	9	10	11	12	13	14
15	16	17	18	19	20	21
22	23	24	25	26	27	28
29	30	1	2	3	4	

Complete

100%



Current



Correct

- Customer Service



Organisations Companies House a with on fraud



The Insolvency
Service



National Fraud
Authority



Home Office



HM Revenue
& Customs



quality

timeliness

availability

efficiency

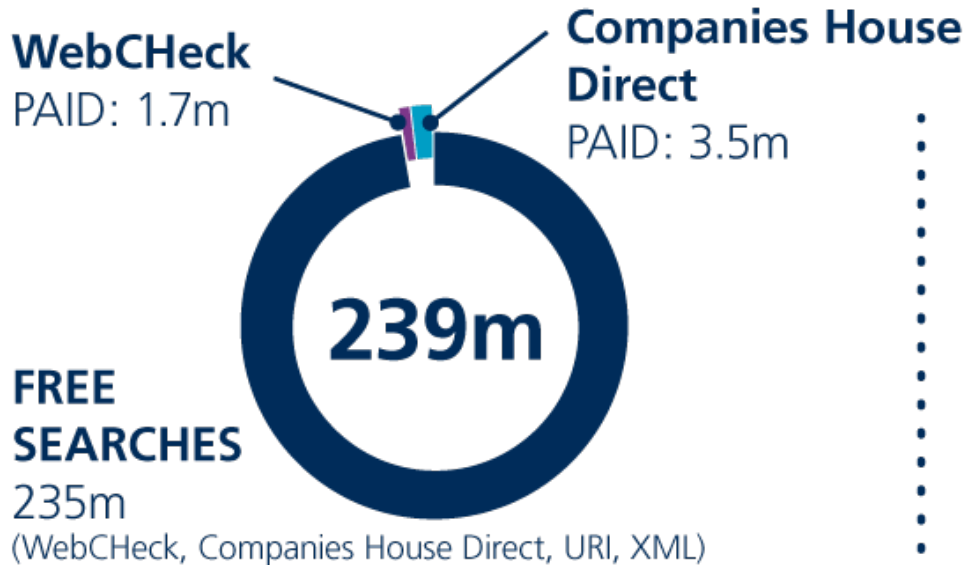
OUR DATA

innovation

sustainability



search



99%



ELECTRONIC

137m



URI Downloads
(1 year)

100,000



APP Downloads

bulk information



Companies House open data

Open data – accessible and free

- URI
- APP
- XML gateway
- iXBRL bulk service
- Free bulk product
- Data formats: RDF, JSON, XML, CSV, YAML & HTML



Free Information

Previous names **Company type**

Overseas information **Company name and number**

SIC code (business classification)

Registered Office address **Free information**

Company name and number **Overseas information**

Country of origin **Company status**

Incorporation date **Date of last**

Accounts made up and due dates **members list**

Number of charges **company status** **Free**

Company type **Free** **Company name and number** **information**

Incorporation date **information** **Country of origin**

Registered Office address **Accounts made up and due dates**

All in 2015?

Companies House open data

- 250% - 500% increase
- New uses
- Increases corporate transparency
- Many eyes increases quality



FREE accounts data



EXPLORE THE POWER OF OPEN DATA

Search the Companies House XBRL database

[Explore](#)



Intuitive solutions for corporate XBRL and iXBRL filing



Helping government agencies build robust XBRL infrastructure



Unparalleled expertise for banking and insurance markets

We serve

Banking and insurance

Government regulators and agencies

Corporate filers

Unleash the power of XBRL

Build powerful online reporting frameworks

Create and apply fundamental business rules

Review and analyse data

File statutory returns

Conquer the CRD IV and Solvency II challenge

I need to

Build a taxonomy

Review XBRL documents

View published taxonomies

Produce succinct business rules

Validate and process XBRL

Submit statutory returns online

Convert data for prudential reporting

Consume prudential reports in XBRL

What people are saying

“CoreFiling takes the sting out of iXBRL filings for HMRC.”

Gary Simon, FSN

Dormant

false 1713654

true 452437

In Receivership

false 2166087

true 4

Liquidation

false 496729

In Administration

false 2166091

Trading

true 1398306

false 767785

Exempt from preparing cashflow statement under FRS1

false 2136795

true 29296

Exemption under section 477

true 1683902

false 482189

Exemption under section 480 relating to dormant companies

true 452442

false 1713649

Members have not required audit

true 2164932

false 1159

Cash at bank/in hand

< 0 2948

0 5000 957015

Search



Search by **filing information** basic company information

Clear all filters



2166091 search results (showing 1 to 10)

100 ms

« < 1 2 3 4 ... > »

CROSSROADS GARAGE BEGELLY LIMITED

Number: 05656958

Status: Active

Category: Private Limited Company

Accounts: TOTAL EXEMPTION SMALL

Filing: [05656958_20130131.html](#)

SEATON HEATING & ENGINEERING SERVICES LIMITED

Number: 01186689

Status: Active

Category: Private Limited Company

Accounts: TOTAL EXEMPTION SMALL

Filing: [01186689_20130131.html](#)

SONISKING BUSINESS CONSULTANCY LIMITED

Number: 07899509

Status: Active

Category: Private Limited Company

Accounts: DORMANT

Filing: [07899509_20130131.html](#)

LMI MEDIA LIMITED

Number: 07511114

Status: Active

Category: Private Limited Company

Accounts: TOTAL EXEMPTION SMALL

Filing: [07511114_20130131.html](#)

D L HALLAM LIMITED

Number: 05977412

Status: Active

Filing: [05977412_20130131.html](#)

SEATON HEATING & ENGINEERING SERVICES
LIMITED
01186689



Companies House

[rdf](#) [json](#) [xml](#) [html](#) [csv](#) [yaml](#)

CompanyName SEATON HEATING & ENGINEERING SERVICES LIMITED

CompanyNumber 01186689

RegAddress

AddressLine1 WILNECOTE LANE

AddressLine2 BELGRAVE

PostTown TAMWORTH

County STAFFS

Postcode B77 2LE

CompanyCategory Private Limited Company

CompanyStatus Active

CountryOfOrigin United Kingdom

IncorporationDate 10/10/1974

Accounts

AccountRefDay 31

AccountRefMonth 01

NextDueDate 31/10/2014

LastMadeUpDate 31/01/2013

AccountCategory TOTAL EXEMPTION SMALL

Returns

NextDueDate 06/09/2014

LastMadeUpDate 09/08/2013

Mortgages

NumMortCharges 2

NumMortOutstanding 2

NumMortPartSatisfied 0

NumMortSatisfied 0

SICCodes

SicText 47789 - Other retail sale of new goods in specialised stores (not commercial art galleries and opticians)

quality

timeliness

availability

efficiency

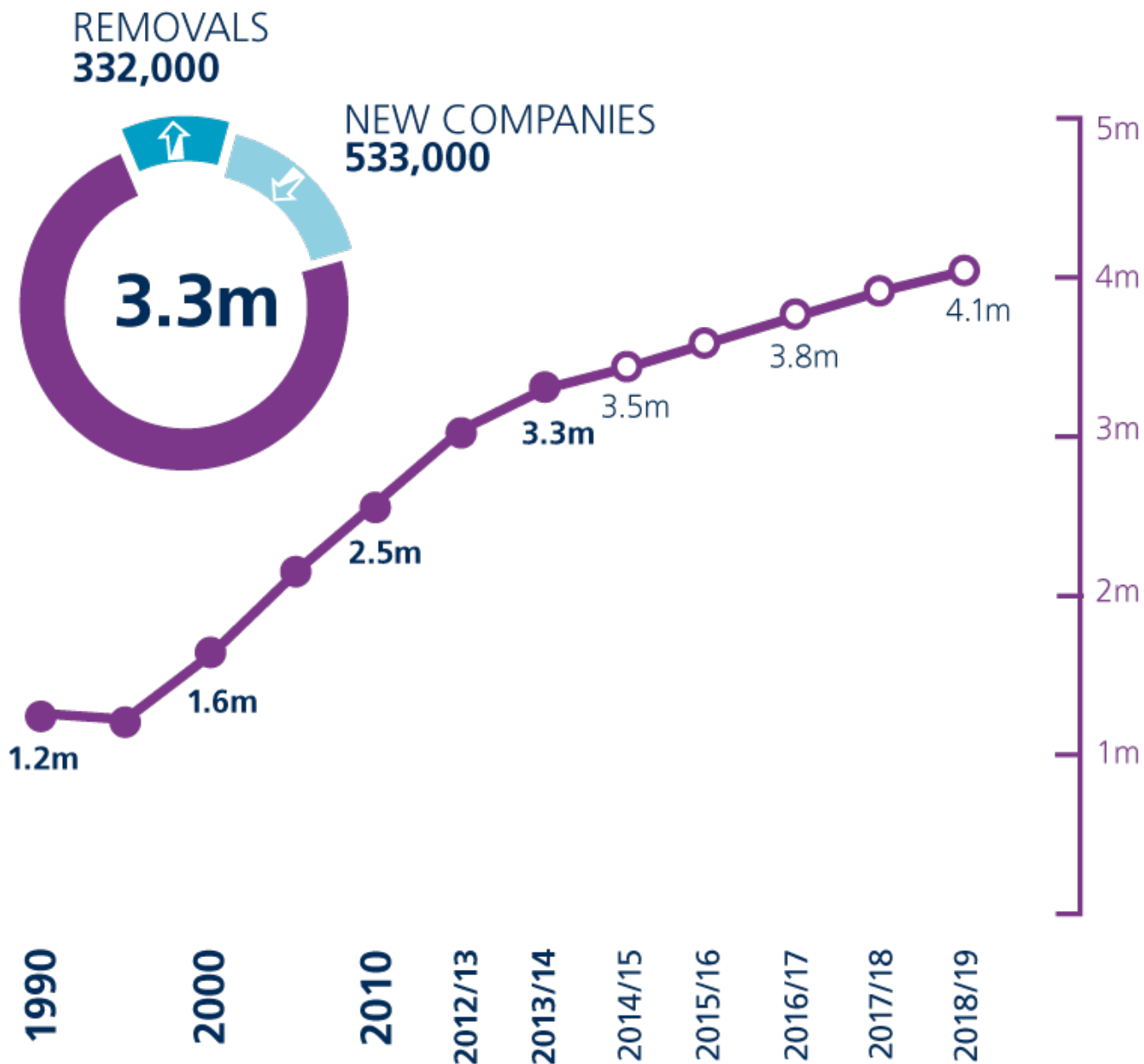
OUR DATA

innovation

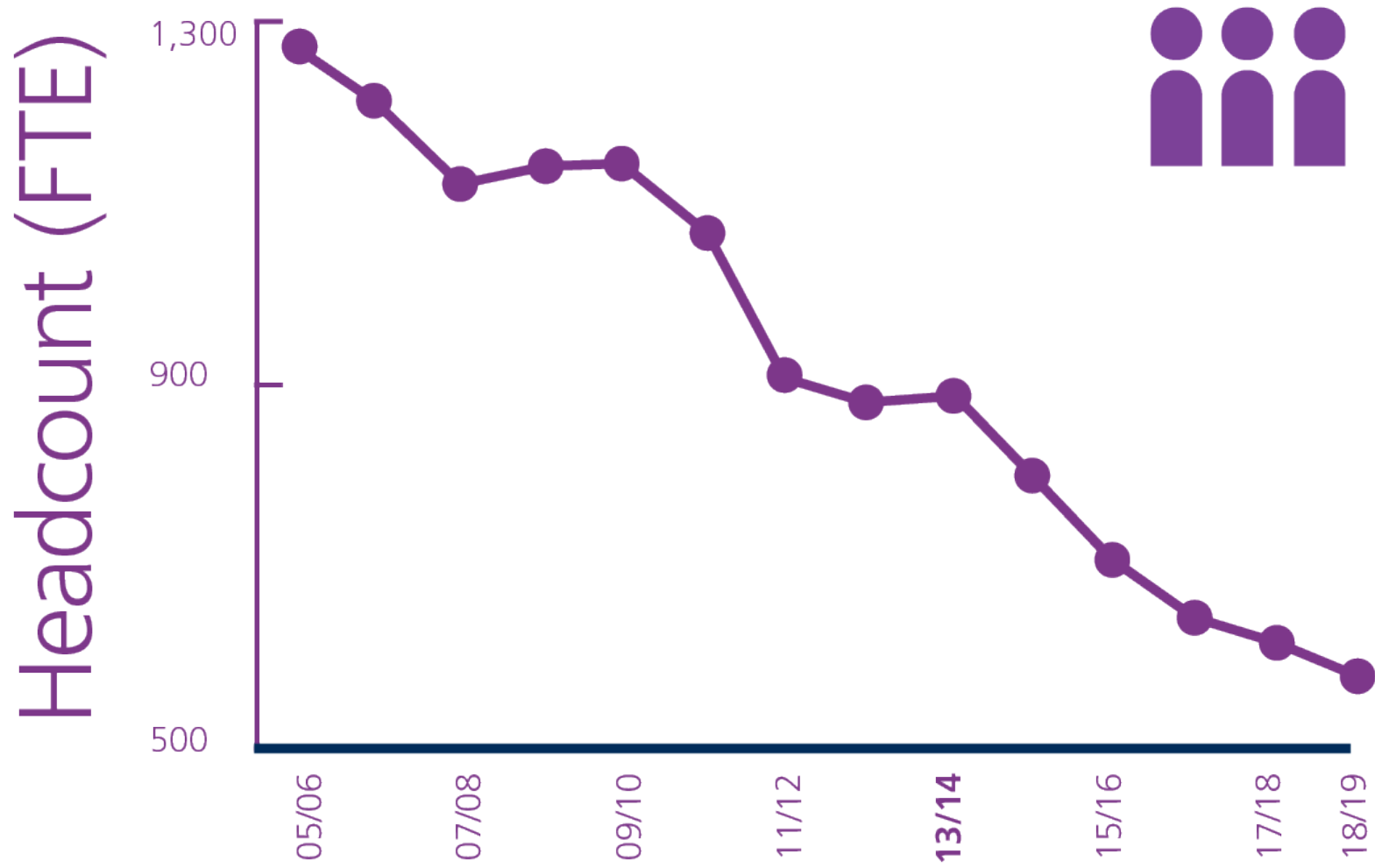
sustainability



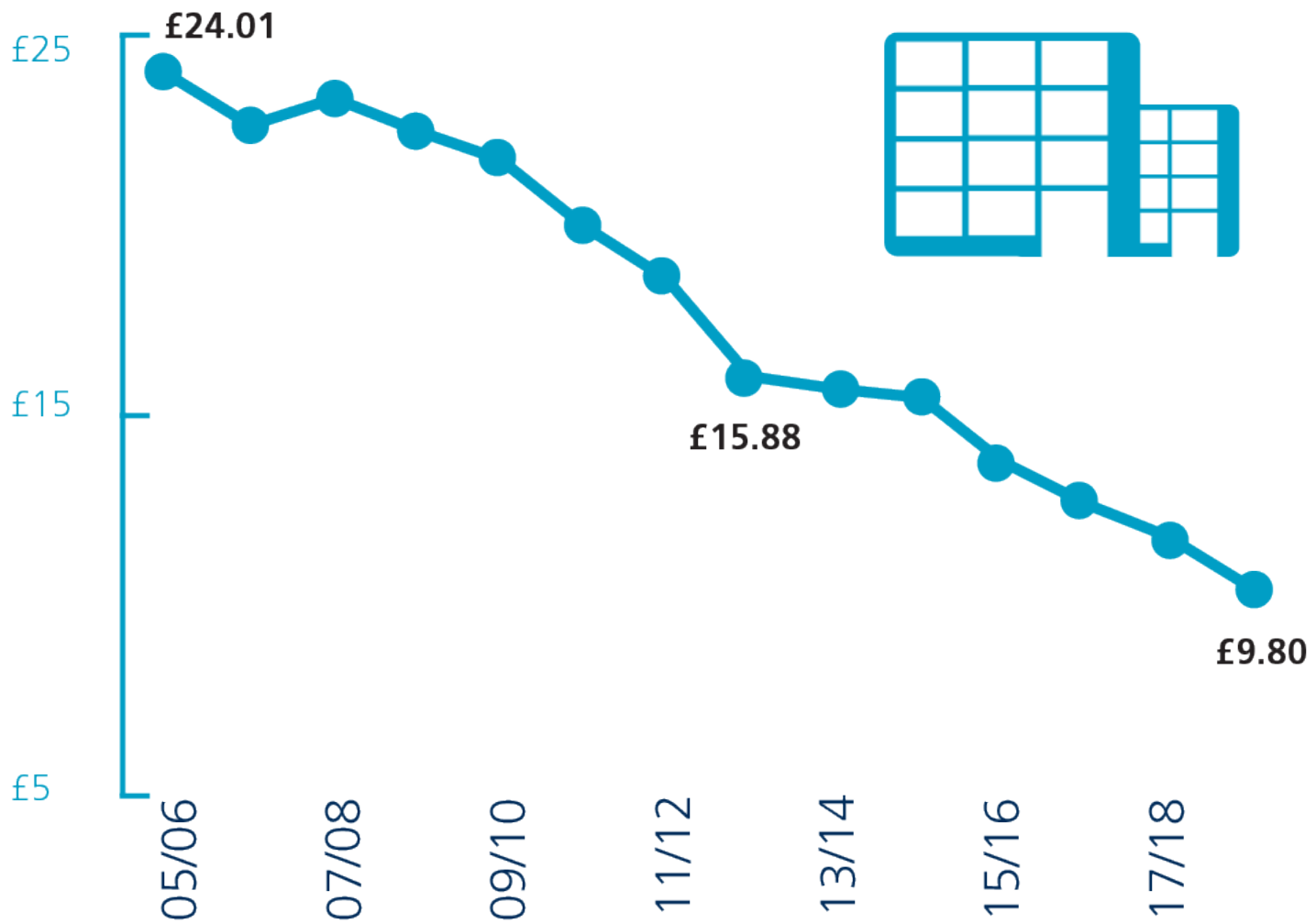
Growth in Register



Efficiency: Headcount



Cost per company



quality

timeliness

availability

efficiency

OUR DATA

innovation

sustainability

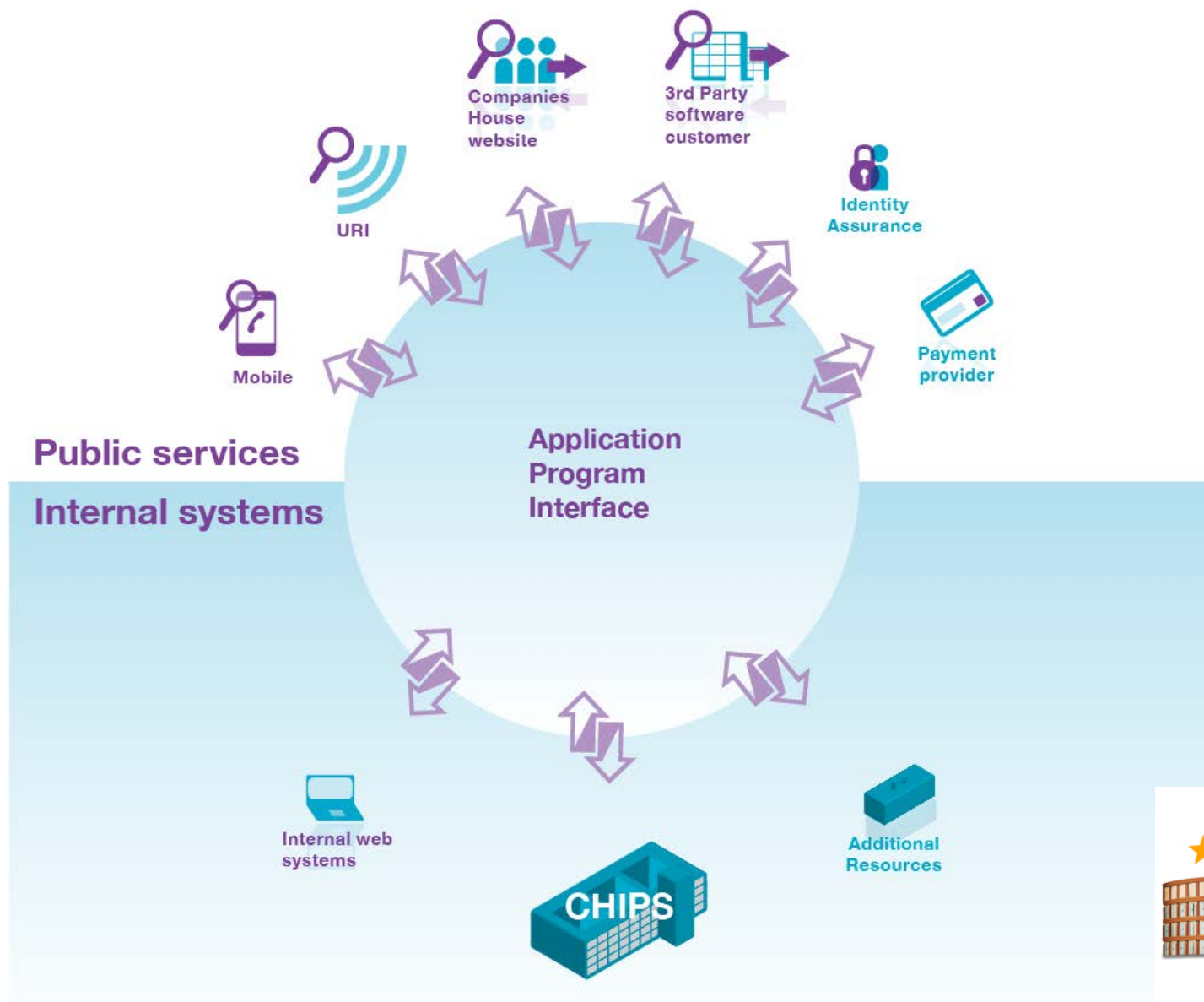


Innovation

- Companies House Service
- App
- Gov.uk
- One Click
- Legislative Change
- Company Accounts and Tax Online (CATO)
- Usability
- Insights



Companies House Service





Welcome to GOV.UK

The best place to find government services and information
Simpler, clearer, faster



Contents

[Services and information](#)[Departments and policy](#)[More on GOV.UK](#)

Services and information

[Driving and transport](#)

Includes car tax, MOT and driving licences

[Employing people](#)

Includes pay, contracts and hiring

[Working, jobs and pensions](#)

Includes holidays and finding a job

[Money and tax](#)

Includes debt and Self Assessment

[Citizenship and living in the UK](#)

Voting, community participation, life in the UK, international projects

[Benefits](#)

Includes tax credits, eligibility and appeals

[Passports, travel and living abroad](#)

Includes renewing passports and travel advice by country

[Housing and local services](#)

Owning or renting and council services

[Births, deaths, marriages and care](#)

Parenting, civil partnerships, divorce and Lasting Power of Attorney

[Visas and immigration](#)

Visas, asylum and sponsorship

This website replaces



[Business and self-employed](#)

Tools and guidance for businesses

[Education and learning](#)

Includes student loans and admissions

[Crime, justice and the law](#)

Legal processes, courts and the police

[Disabled people](#)

Includes carers, your rights, benefits and the Equality Act



AN EXAMPLE COMPANY LIMITED

[File for this company](#)

Company number 01394691

A Private Limited incorporated on 18 October 1978

Status: **Active**

Registered office address

**20 BLAND ST
SHEFFIELD
S4 8DG**

Accounts

Next accounts made up to

**31 March 2013 due by
31 January 2012**

Last accounts made up to

31 March 2010



Return Overdue

Next annual return made up to

**18 March 2011 due by
15 April 2011**

Last annual return made up to

18 March 2010

Directors and Secretaries

Name	Role	Appointment date	Date of birth
Jacqueline CROSSLAND	Secretary	14 July 2008	13 June 1961
Jacqueline CROSSLAND	Director	18 March 1992	13 June 1961
Elaine RUDGE	Director	18 March 1992	18 October 1955
Paul WHITE	Director	18 March 1992	24 January 1954

[Help](#)
[username@email.co.uk](#) [Sign out](#)

Filing for: **TEST COMPANY LIMITED** | UTR: 1234567890
Accounting Period: 1 October 2012 - 30 September 2013

Accounts

[Accounts selection](#) ✓

[Company authentication](#) ✓

[About the company](#) ✓

[Officers of the company](#) ✓

[Directors' Report](#) ✓

Profit and Loss

[Balance Sheet](#)
[Balance Sheet continued](#)
[Footnotes](#)
[Approve accounts](#)

File with Companies House

[File](#)

Computations

Accounts must be approved to continue

Tax review (CT600)

Accounts must be approved to continue

Section 6 of 10

Profit and Loss

account for the year ended 30 September 2013

[View a sample Profit & Loss](#)

	2013 £	2012 £
Turnover	<input type="text"/>	<input type="text"/>
Cost of sales	<input type="text"/>	<input type="text"/>
Gross profit or (loss)	<div>0</div>	<div>0</div>
Distribution costs	<input type="text"/>	<input type="text"/>
Administrative expenses	<input type="text"/>	<input type="text"/>
Other operating income	<input type="text"/>	<input type="text"/>
Operating profit or (loss)		

Signed in to
Companies House
[Sign out](#)

- [Change account details](#)
- [My recent filings](#)
- [Company authentication](#)
- [File for a different company](#)
- [Company overview](#)

Filing for: AT THE NUTSHELL LIMITED (05373398)

Intangible fixed assets note

	2011 £	2010 £
Intangible assets	1000	1000

Cost	£
At 1 January 2011	
Additions	
Disposals	
Revaluations	
Transfers	
At 31 December 2011	
Amortisation	
At 1 January 2011	
Charge for the year	
On disposals	
At 31 December 2011	
Net book value	
At 31 December 2011	

quality

timeliness

availability

efficiency

OUR DATA

innovation

sustainability



Sustainability

Who/What is a Company?



Making limited liability work, balancing:

- The need for **integrity** with
- **ease of doing business**, lifting burdens to give
- Corporate **transparency**



The future

- Digital
- Current & True
- Open
- Connected





Our data

How to guarantee quality, availability, timeliness together with efficiency, innovation and sustainability

Tim Moss, Registrar of Companies, UK